

# EPIPHANY

JESUS THE  
LIGHT FOR THE  
WHOLE WORLD



# MATTHEW 2:1-18



**WHO  
GOD IS**



# WHO GOD IS

*Sovereign King  
Merciful Shepherd*



# WHAT GOD DOES



# WHAT GOD DOES

*Forms Worshipers*



# WHAT GOD DOES

*Forms Worshipers  
Starts Small*



# WHAT GOD DOES

*Forms Worshipers*  
*Starts Small*  
*Defies Expectation*





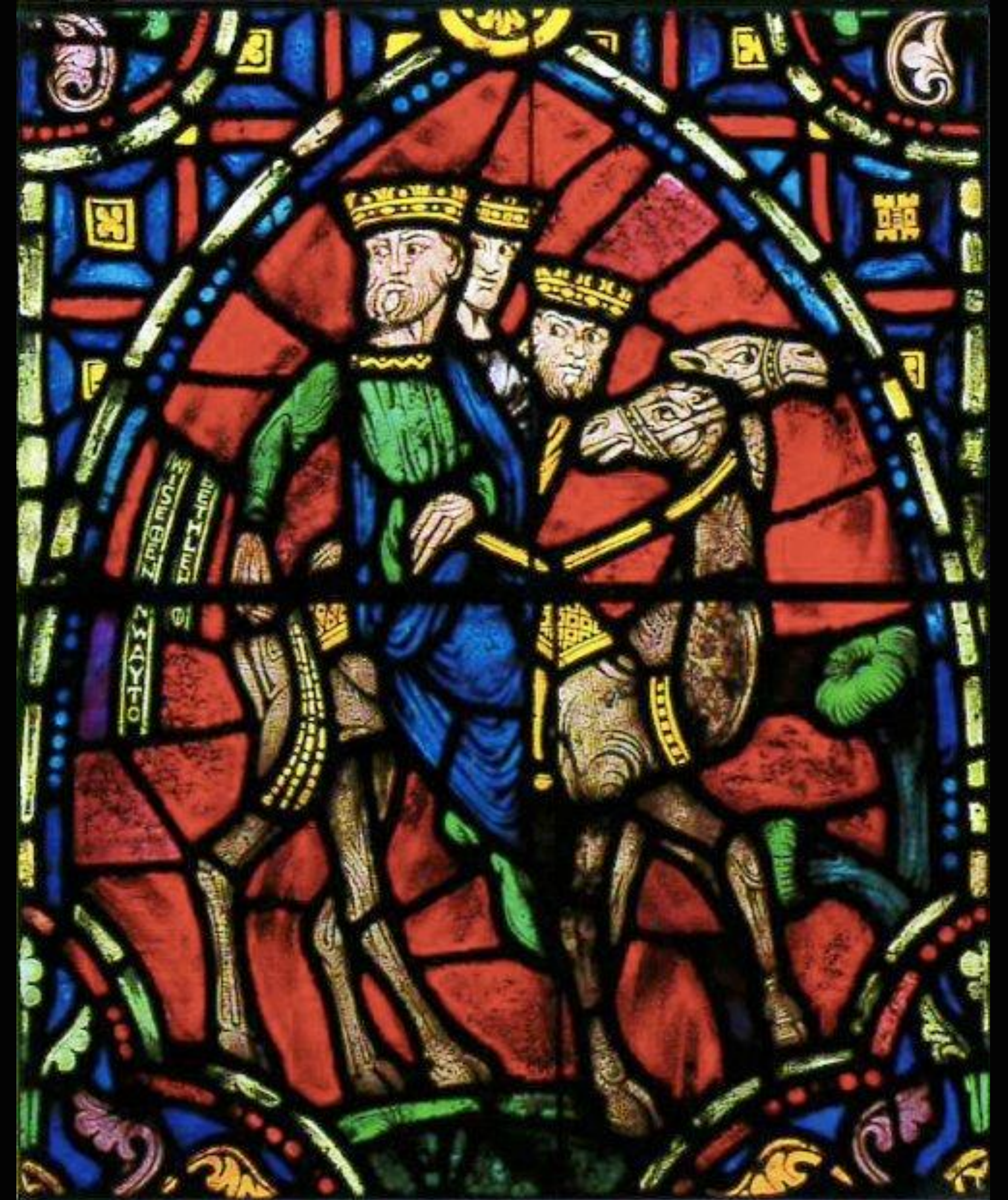
# WHAT GOD DOES

*Forms Worshipers*

*Starts Small*

*Defies Expectation*

*Accomplishes His Plan*



**WHERE  
WE FIT**



**GLORY  
TO YOU,  
LORD  
CHRIST**

